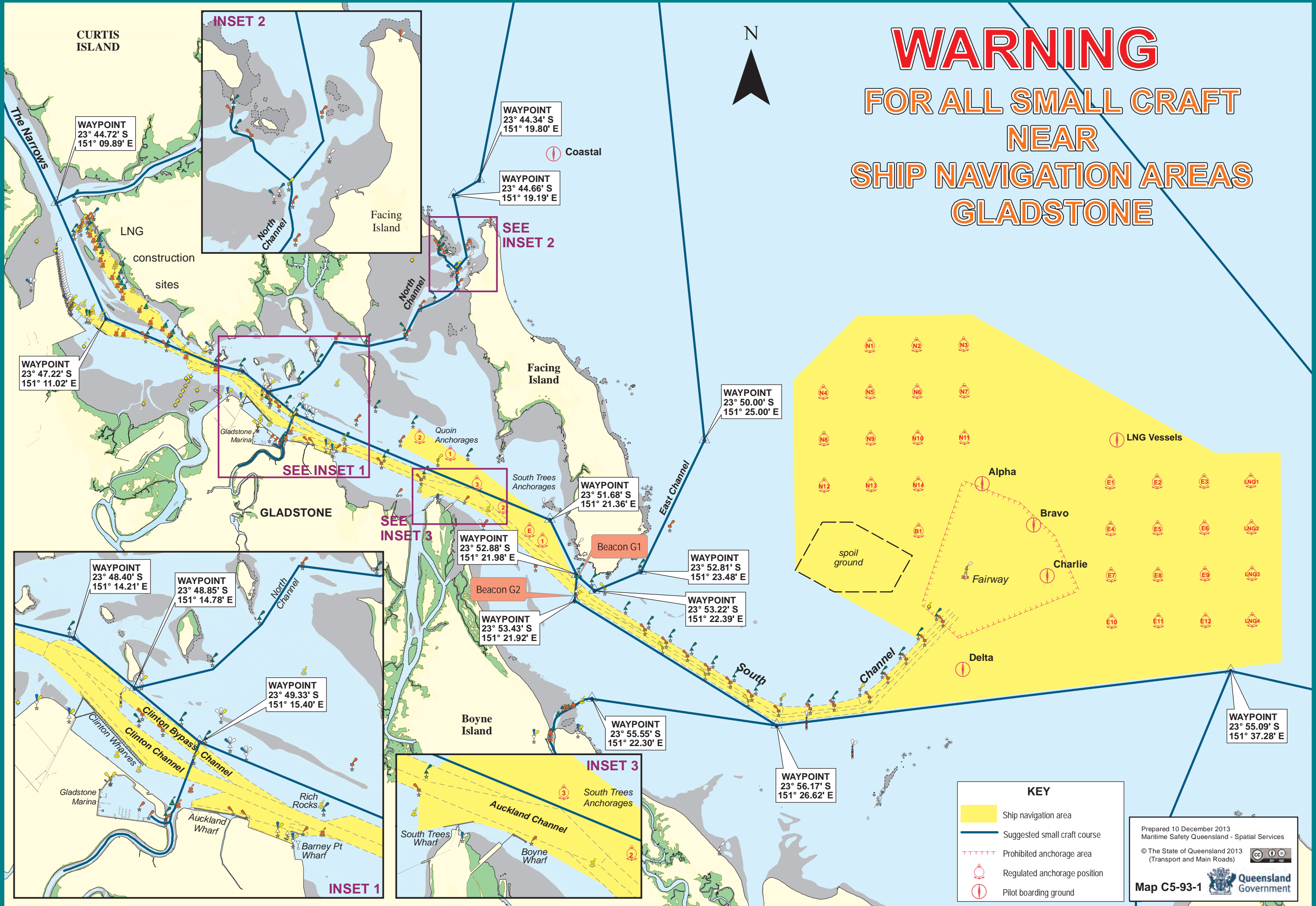


# WARNING FOR ALL SMALL CRAFT NEAR SHIP NAVIGATION AREAS GLADSTONE



WAYPOINT  
23° 44.72' S  
151° 09.89' E

WAYPOINT  
23° 44.34' S  
151° 19.80' E

WAYPOINT  
23° 44.66' S  
151° 19.19' E

WAYPOINT  
23° 47.22' S  
151° 11.02' E

WAYPOINT  
23° 50.00' S  
151° 25.00' E

WAYPOINT  
23° 51.68' S  
151° 21.36' E

WAYPOINT  
23° 52.88' S  
151° 21.98' E

WAYPOINT  
23° 52.81' S  
151° 23.48' E

WAYPOINT  
23° 53.43' S  
151° 21.92' E

WAYPOINT  
23° 53.22' S  
151° 22.39' E

WAYPOINT  
23° 55.55' S  
151° 22.30' E

WAYPOINT  
23° 56.17' S  
151° 26.62' E

WAYPOINT  
23° 55.09' S  
151° 37.28' E

KEY	
	Ship navigation area
	Suggested small craft course
	Prohibited anchorage area
	Regulated anchorage position
	Pilot boarding ground

Prepared 10 December 2013  
Maritime Safety Queensland - Spatial Services  
© The State of Queensland 2013  
(Transport and Main Roads)

**Map C5-93-1** Queensland Government